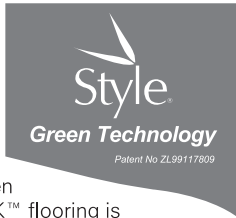


Style LOCK™ INSTALLATION

The Green Alternative to Hardwood



StyleLOCK™ flooring is a revolutionary product made from 100% sustainable bamboo which is transformed into an extremely dense and long lasting natural material using Style Green Technology™. StyleLOCK™ flooring is not a hardwood, engineered or laminate product and therefore has specific requirements to ensure a successful installation. Provided you follow the guidelines below, you will enjoy a beautiful and long lasting floor.



Read the following instructions in their entirety before opening any packaging or starting the installation.

Important

- It is considered the sole responsibility of the installer/owner to determine if the job site's sub floor and environmental conditions are suitable for the installation of Style LOCK™ and accessories.
- Check all boards fully before installation for visual or structural defects. Any defects in the product should be notified in writing to the point of purchase retailer of the flooring before installation.



EU Patent 0843 763 B1 U.S. Patent nr. 6,006,486.

PREPARATION CHECKLIST

Ambient Environment

StyleLOCK™ flooring must be acclimated and installed in controlled environments with a stable temperature of 15-24°C (65-75°F), with an internal ambient relative humidity level between 35-55%.

Site Conditions

- Flooring should be the last item installed for all commercial or domestic applications. All other trades must be completed before the flooring can be installed.
- Ensure site is thoroughly clean and all debris are removed
- The subfloor must be flat and structurally sound.

For Concrete Subfloors

- Ensure concrete slab is a minimum of 60 days old
- Concrete density must be at a minimum of 3000psi/25mpa
- All uneven areas in the subfloor must be filled with cementitious leveling compound (refer to manufacturers instructions), and grinded to conform to minimum requirements of 4mm (3/16") deflection over a 3m (10') radius.
- Check moisture content of concrete using a Tramex concrete moisture encounter meter 2004, Tramex CRH or Tramex CRM Expert. **If reading is above 5.99, the manufacturer recommends StyleLOCK™ should not be installed.**
- If using a calcium chloride test, concrete must not exceed 3 lbs/1,000 sq ft/24 hrs

For Wooden Subfloors

- Check moisture content of the wood subfloor using an invasive wood moisture meter. If moisture content is over 10%, the manufacturer recommends StyleLOCK™ should not be installed.
- Wooden subfloor must be flat, structurally sound and stable with a minimum variation of 4mm (3/16") over a 3m (10') radius.
- Check subfloor has no mould, contaminants or squeaking areas. Rectify if required.

Radiant Heating (if applicable)

- StyleLOCK™ can only be installed over hydronic radiant heating systems.
- The temperature of the floor must be controlled to a maximum of 29°C (84°F)
- The radiant heating system shall be in operation at recommended temperature for at least 7 days prior to installation, shut off 4 hours prior to installation and then returned to operation once installation is complete
- As radiant heating systems create dry heat, it is essential that the ambient relative humidity in the installation environment be maintained between a range of 35-55% (a humidifier/dehumidifier may assist in maintaining humidity levels).

Product Acclimation

- StyleLOCK™ requires the acclimation of product for a minimum of 72 hours prior to installation, according to internal relative humidity levels (see below table);

Relative Humidity (RH)	Acclimation Time
35%	96 hours
40%	72 hours
45%	72 hours
50%	72 hours
55%	96 hours

- Place boxes in the middle of the room, away from walls in the area to be installed.
- Open the lids of all boxes and cut plastic wrap, to allow product to acclimate to current ambient relative humidity

Moisture Barrier Preparation

All installations on wood or concrete subfloor require the use of a 6mil impermeable vapour barrier (6 mil polyethylene) in all areas where StyleLOCK™ will be installed plus 2mm (3/32") pad or 2 in 1 impervious underpad on top of 6mil.

Ensure joins overlap by at least 200mm (8"), are taped securely with Tuct tape and folded up all walls 50mm (2").

For concrete subfloors, all installations require the use of Sika Primer Moisture Barrier (or an equivalent approved epoxy moisture barrier – please contact your retailer for approved alternative) in addition to the impermeable vapour barrier. The Sika MB should be installed first in accordance with manufacturer's instructions.

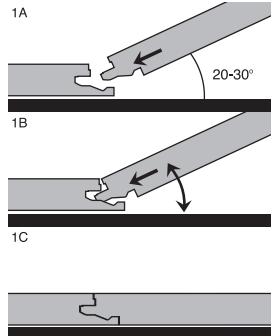
STEP BY STEP INSTALLATION

How the Uniclic® system works

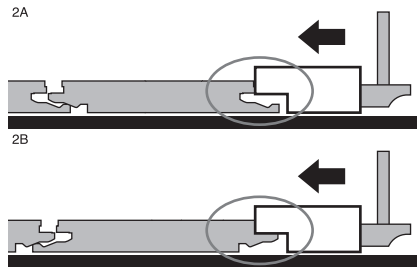
Method A: Position the panel to be installed at an angle of 20 to 30 degrees to the panel already installed. Move the panel gently up and down and at the same time exert forward pressure. The panels will automatically click into place. You can either insert the tongue into the groove, or the groove into the tongue.

Important: Even though the lock may appear tight, it is mandatory that you secure the lock by gently tapping both the side and end joints. (use a Uniclic® tapping block and do not secure the lock with one strong tap). See diagram 2A - 2B.

The tongue in groove method is the most common and easiest way. See diagram 1A - 1B - 1C.



Method B: With Uniclic® you can also tap the panels into each other without lifting. For this method you must use a Uniclic® tapping block. The planks should not be joined with a single tap. Avoid damaging the panels by gently and repeatedly tapping the boards to secure the lock. See diagram 2A - 2B.



Style Head Office:

Level 1, 172-192 Flinders Street, Melbourne,
Victoria, Australia 3000 - info@stylelimited.com
www.stylelimited.com

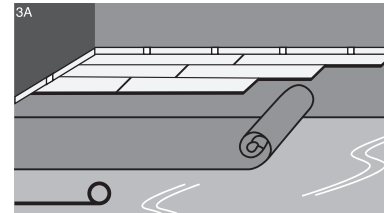
It is recommended after you finish the first row that you use the angle plus tap on the long side of the board (Method A) and secure the short side (ends of the plank) using method B after the long side is locked (tapped) in place.

Tip: It is easier to install the long side as shown in method A and install the end joint as shown in method B. Minimize the distance you need to tap the end joints together by positioning the new board as close as possible to the end of the installed board.

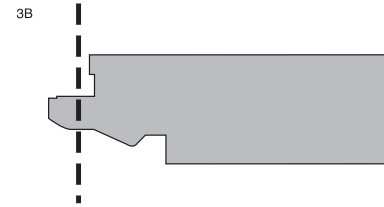
Installation

Install a 2mm (3/32") pad or 2 in 1 underlayment pad, following the manufacturer's instructions over the 6mil polyethylene moisture barrier.

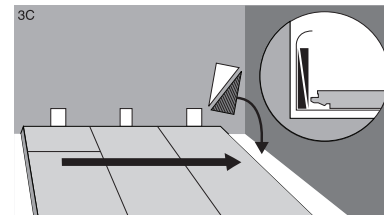
Be sure to tape all underpad seams with Tuct Tape. Run the membrane up the wall 50mm (2"). A moulding can be attached to this later. See diagram 3A.



Begin the first row with a whole plank. First saw off the tongue on both the long and short sides. See diagram 3B.

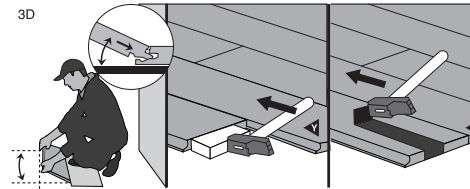


Put the plank with sawn off sides against the walls. Put spacers between the planks and wall. This will ensure that your expansion joint is wide enough: 10mm to 12mm (1/2" to 5/8"). See diagram 3C.



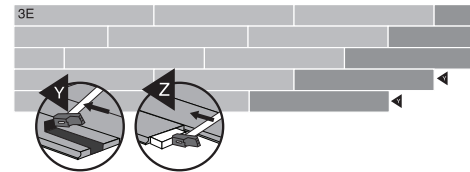
Install the boards one plank at a time, making sure to angle the boards correctly and ensure the locking system is fully secured.

Use a tapping block to tap the locking system firmly on the side and end of the boards. Where the tongue has been sawn off for the boards next to the wall, use a pull-bar to tap into position. See diagram 3D.



Place the planks in a random position and always ensure that the end joints are staggered at least 152mm (6"), this is to provide strength to the combined floor.

You can use the left-over pieces (cut offs) from the first row - these must be a minimum of 500mm (1.6'). See diagram 3E



When an entire row has been completed, review the row to ensure there is no gapping and that all locking mechanisms are fully engaged (all planks are perfectly flat). Note: Never hammer planks without using a tapping block or damage to the boards may result.

Place a weight (e.g. a carton of planks) on the completed boards to stabilize them. Continue to use this method to install the whole floor.

Remember you can use the left-over pieces that you have from the end of each row to begin the next row (minimum 500mm or 1.6'). Always place a weight on the joints that you have just made to stabilize them.

Installation Tips

- Allow for extra clearance underneath doorways and cupboards. Check that doors can open after installing the floor with a clearance of 8mm (3/16")
- Open a minimum of 3 boxes and blend different shades together for a natural finish.
- Ensure starting line is straight and fixed.
- Stagger end joints of boards from row to row at a minimum of 250mm (10"), to strengthen the entire floor and create a random pattern finish.
- Do not fix, install cabinets or walls on top of the floating floor
- Fix baseboards over the moisture barrier. Never fix baseboards to the floor itself, but allow the floor to expand and contract underneath the baseboard.
- Because the humidity of a room can vary due to differences between seasons, the floor must be able to expand and contract in all directions. To facilitate this, an expansion space and contraction allowance of 12 to 15mm (1/2" to 5/8") should be provided at all walls of fixed vertical obstructions. i.e. Kitchen islands etc. It may be necessary to add a quarter round to conceal possible gapping.
- For commercial applications, it is recommended that the Natural Collection & Antique (Designer Collection) be used only.

Floors wider than 20ft

On floors wider than 20 ft (6m), to minimize expansion, more or less spacing may be required depending on geographical area, interior climate control and the time of year. In some areas, additional spacing may not be necessary. For more information, contact your local Style agent or representative.